

DRAPERY
HARDWARE

Made in USA



Since 1965



ABOUT US

For over 60 years, Lundy's has provided workrooms, interior designers, landscape designers, and architects with the highest quality iron products, innovative designs and unprecedented customer service. The mission has remained the same since 1965 - make quality products, pay close attention to detail and to exceed the expectations of our customers. We offer a full range of services including welding, custom design, hand forging, CNC machine fabricating, sandblasting and powder coating. All done in house by talented and passionate employees. Come work with our team and support American Made products.



CONTENTS

02

FRENCH RODS

08

FINIALS

17

MIXED METALS

18

BRACKETS

24

RODS - RINGS - ACCESSORIES

28

SPECIALTY WINDOWS

33

FINISHES

36

SPECIALTY METALS



FRENCH RODS

FRENCH RODS

Solid round steel rod/soft bend: $\frac{1}{2}$ " - $\frac{5}{8}$ " - $\frac{3}{4}$ "

Welded to plate

Rectangular Plate

Pole at top

Plate for $\frac{1}{2}$ " rod: $\frac{3}{4}$ " wide x $2\frac{3}{4}$ " long

Plate for $\frac{5}{8}$ " & $\frac{3}{4}$ " rod: 1" wide x $2\frac{3}{4}$ " long



CFRENCH1

Rectangular Plate

Pole in center

Plate for $\frac{1}{2}$ " rod: $\frac{3}{4}$ " wide x $2\frac{3}{4}$ " long

Plate for $\frac{5}{8}$ " & $\frac{3}{4}$ " rod: 1" wide x $2\frac{3}{4}$ " long



CFRENCH2

Rectangular Plate

Pole $\frac{3}{4}$ " down from top

Plate for $\frac{1}{2}$ " rod: $\frac{3}{4}$ " wide x $3\frac{1}{2}$ " long

Plate for $\frac{5}{8}$ " & $\frac{3}{4}$ " rod: 1" wide x $3\frac{1}{2}$ " long



CFRENCH3

Circle Plate

Pole in center

Plate for $\frac{1}{2}$ " rod: $1\frac{3}{4}$ "

Plate for $\frac{5}{8}$ " & $\frac{3}{4}$ " rod: 2"



CFRENCH4

Square Plate

Pole in center

Plate for $\frac{1}{2}$ " rod: $1\frac{1}{2}$ " x $1\frac{1}{2}$ "

Plate for $\frac{5}{8}$ " & $\frac{3}{4}$ " rod: 2" x 2"



CFRENCH5



Pinned

All rods will be pinned for treatment or shipping purposes.
Standard measurements are from outside to outside of bends.
Standard projection is $3\frac{1}{2}$ ". Other projections available.
Available powder coated or hand painted.

FRENCH RODS



Solid round steel rod/sharp bend: $\frac{1}{2}$ " - $\frac{5}{8}$ " - $\frac{3}{4}$ "
Welded to plate

Rectangular Plate

Pole at top

Plate for $\frac{1}{2}$ " rod: $\frac{3}{4}$ " wide x $2\frac{3}{4}$ " long

Plate for $\frac{5}{8}$ " & $\frac{3}{4}$ " rod: 1" wide x $2\frac{3}{4}$ " long



SQFRENCH1

Rectangular Plate

Pole in center

Plate for $\frac{1}{2}$ " rod: $\frac{3}{4}$ " wide x $2\frac{3}{4}$ " long

Plate for $\frac{5}{8}$ " & $\frac{3}{4}$ " rod: 1" wide x $2\frac{3}{4}$ " long



SQFRENCH2

Rectangular Plate

Pole $\frac{3}{4}$ " down from top

Plate for $\frac{1}{2}$ " rod: $\frac{3}{4}$ " wide x $3\frac{1}{2}$ " long

Plate for $\frac{5}{8}$ " & $\frac{3}{4}$ " rod: 1" wide x $3\frac{1}{2}$ " long



SQFRENCH3

Circle Plate

Pole in center

Plate for $\frac{1}{2}$ " rod: $1\frac{3}{4}$ "

Plate for $\frac{5}{8}$ " & $\frac{3}{4}$ " rod: 2"



SQFRENCH4

Square Plate

Pole in center

Plate for $\frac{1}{2}$ " rod: $1\frac{1}{2}$ " x $1\frac{1}{2}$ "

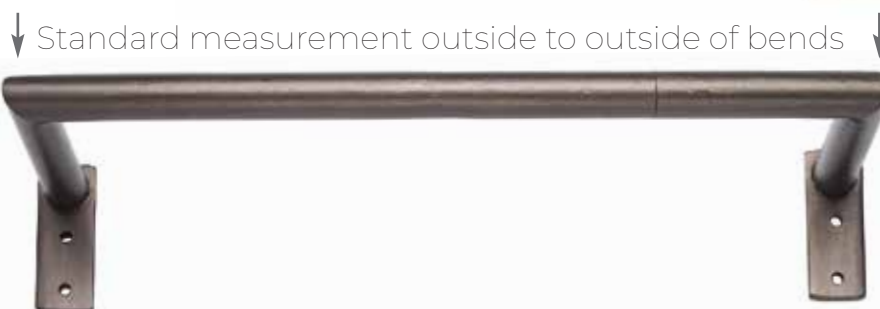
Plate for $\frac{5}{8}$ " & $\frac{3}{4}$ " rod: 2" x 2"



SQFRENCH5



90° SHARP



Standard measurement outside to outside of bends

Standard projection $3\frac{1}{2}$ ". Other projections available.
Available powder coated or hand painted.

TUBING FRENCH RODS $\frac{7}{8}$ " / 1" / 1 $\frac{3}{8}$ " steel tubing

Rods welded directly to wall plate

Actual outside diameter of tubing: $\frac{7}{8}$ " - .840 OD, 1" - 1.0625" OD, 1 $\frac{3}{8}$ " - 1.315" OD

Choose wall plate. Specify projection

Rods pin together for installation purposes

Rectangular Plate

1 $\frac{1}{4}$ " wide x 3" long for $\frac{7}{8}$ " tubing

1 $\frac{1}{2}$ " wide x 3 $\frac{3}{4}$ " long for 1" tubing

2" wide x 4" long for 1 $\frac{3}{8}$ " tubing



TFRENCH1

Rectangular Plate

1 $\frac{1}{4}$ " wide x 3 $\frac{1}{2}$ " long for $\frac{7}{8}$ " tubing

1 $\frac{1}{2}$ " wide x 4" long for 1" tubing

2" wide x 4" long for 1 $\frac{3}{8}$ " tubing



TFRENCH3

Circle Plate

2 $\frac{1}{4}$ " for $\frac{7}{8}$ " and 1" tubing

2 $\frac{1}{2}$ " for 1 $\frac{3}{8}$ " tubing



TFRENCH4

Available in all powder coated and painted finishes.

Standard projection for $\frac{7}{8}$ " and 1" tubing - 3 $\frac{1}{2}$ ". Standard projection for 1 $\frac{3}{8}$ " tubing - 4 $\frac{1}{2}$ ".

Other projections available.

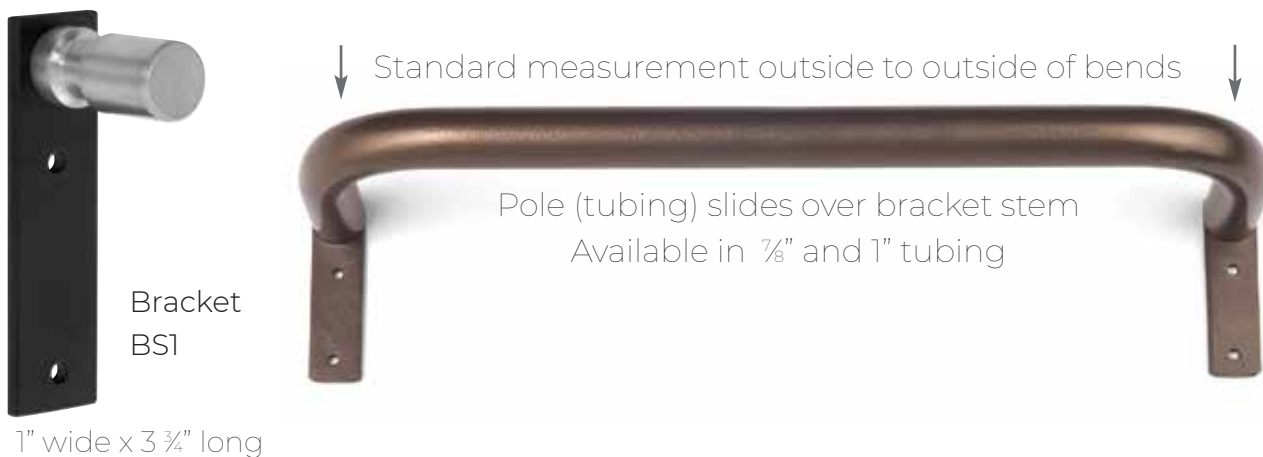
BRACKET STEMS $\frac{7}{8}$ " - 1" round steel tubing



Rectangular Plate with pole at top

Rod slides over bracket with stem and tightens with set screw

Soft Bend Return



Sharp Bend Return



Pin may be required for shipping purposes.
Standard projection is $3\frac{1}{2}$ " to center for $\frac{7}{8}$ " rod, 4" to center for 1" rod.
Other projections available.





FINIALS

FINIALS



$\frac{1}{4}$ " long x 1" high
F31-1 Steel
S31-1 Stainless
BC31-1 Brass



$\frac{1}{4}$ " long x 1 $\frac{1}{4}$ " high
FA1 Steel



$\frac{1}{4}$ " long x 1 $\frac{1}{4}$ " high
F31 Steel
S31 Stainless
BC31 Brass



$\frac{3}{8}$ " long x 1 $\frac{3}{8}$ " high
F07 Steel
S07 Stainless
BC07 Brass



$\frac{1}{4}$ " long x 1 $\frac{1}{2}$ " high
F31-112 Steel



$\frac{3}{8}$ " long x 1 $\frac{5}{8}$ " high
F07-158 Steel



$\frac{1}{4}$ " long x 1 $\frac{3}{4}$ " high
F36-14 Steel



$\frac{1}{4}$ " long x 2" high
F31-2 Steel

FINIALS



1" long x $\frac{3}{4}$ " high

FA2 Steel
SA2 Stainless
BCA2 Brass



$\frac{3}{4}$ " long x $\frac{3}{4}$ " high

F03 Steel
S03 Stainless
BC03 Brass



$\frac{1}{4}$ " long x $1\frac{1}{4}$ " high

FA3 Steel



rings welded to
end of rod

$\frac{3}{8}$ " long

F32 Steel



$\frac{3}{8}$ " long x 2" high

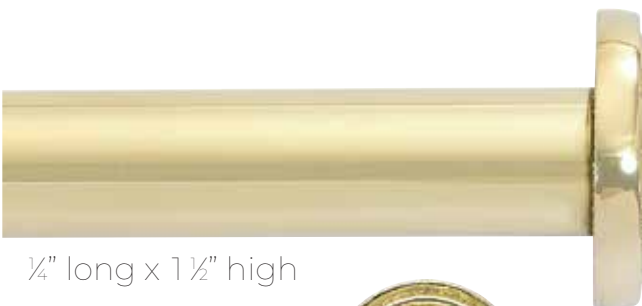
BCA4 Brass



ring welded to
end of rod

$\frac{3}{16}$ " long

F33 Steel



$\frac{1}{4}$ " long x $1\frac{1}{2}$ " high

BCA5 Brass



$\frac{3}{16}$ " long x 2" high

FA6 Steel



Most finials can be adapted for tubing.

FINIALS



1 1/8" +/-

F58R Steel
S58R Stainless
BC58R Brass



1 1/2" long x 1 1/8" high
FA7 Steel



2 1/8" +/-

F61R Steel
S61R Stainless
BC61R Brass



2" long x 2 1/4" high
F44 Steel



2 1/8" +/-

F66R Steel
S66R Stainless
BC66R Brass



3 1/8" long x 2 1/4" high
F60 Steel

FINIALS



$\frac{3}{4}$ "
F54 Steel



1"
F58 Steel
S58 Stainless
BC58 Brass



1 1/2"
F61 Steel
S61 Stainless
BC61 Brass



2"
F66 Steel
S66 Stainless
BC66 Brass



1 1/8"
FA8 Steel
SA8 Stainless
BCA8 Brass



1 5/8"
FA9 Steel
SA9 Stainless
BCA9 Brass



2 1/8"
FA10 Steel
SA10 Stainless
BCA10 Brass
Mixed metals shown

Most finials can be adapted for tubing.

FINIALS



1½" long x 1½" high
F490 Steel



1⅝" long x 1¼" high
F450 Steel
S450 Stainless
BC450 Brass



¾" long x 1½" high
F500 Steel
S500 Stainless
BC500 Brass



1⅜" long x 1½" high
F280 Steel
S280 Stainless
BC280 Brass



¾" long x 1⅞" high
F510 Steel



2⅜" long x 1¼" high
F480 Steel
S480 Stainless
BC480 Brass

FINIALS



2 5/8" long x 1 3/8" high

F560 Steel
S560 Stainless
BC560 Brass



1 3/4" long x 1 3/8" high

FA12 Steel
SA12 Stainless
BCA12 Brass



1 3/4" long x 2" high
(3/4" rod)
F71 Steel



1 3/4" long x 2" high
F079 Steel



2" long x 2" high
FA20 Steel



2 1/8" long x 1 3/8" high

FA13 Steel
SA13 Stainless
BCA13 Brass

Most finials can be adapted for tubing.

FINIALS



3 ¾" long x 2" high
FA14 Steel



2" long x 2" high
F280B Steel
S280B Stainless



3 ¼" long x 2" high
F466 Steel



3 ½" long x 2 ¾" high
FA15 Steel

FINIALS



3" long x 2" high

FA16 Steel

BCA16 Brass



3 1/2" long x 2 1/4" high

F284 Steel



1 3/4" long x 2" high

F450B Steel

S450B Stainless

BC450B Brass



3" long x 1 5/8" high

FA17 Steel

SA17 Stainless

BCA17 Brass

MIXED METALS



White

Polished Stainless

BRACKET
SBV021

Mix metals with brackets,
rods, rings and finials



FINIAL
FA22 Steel
SA22 Stainless
BCA22 Brass
¾" x 4" long
Available ¾" rod



Simply Black / Polished Brass



Loft Grey / French Grey



Cappuccino / Satin Brass



Satin Brass / Simply Black

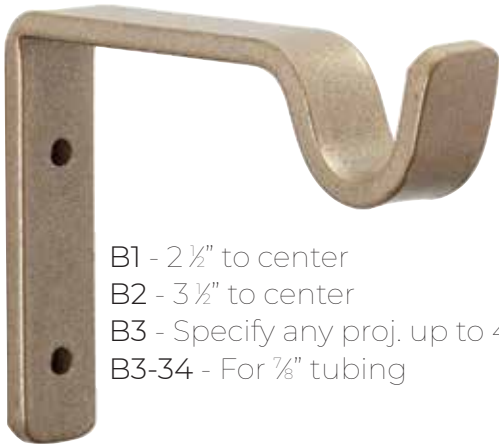


BRACKETS

STEEL BRACKETS

Projection is measured from the wall to the center of the rod unless otherwise specified.

Vertical Leg - 3 1/8"



B1 - 2 1/2" to center
B2 - 3 1/2" to center
B3 - Specify any proj. up to 4"
B3-34 - For 7/8" tubing

Vertical Leg - 3 1/8"



B4 - Specify proj. over 4"
1/4" stock
For 3/4" rod

Vertical Leg - 3 1/8"



B58 - For 5/8" rod

Vertical Leg - 3 1/8"



B8 - Square cup 3 1/2"

Vertical Leg - 3 1/8"



1/2" wide stock good for 3/8" & 1/2"
B6 - 3 1/2" to center
B7 - Specify any proj. up to 4"

Vertical Leg - 3"



BV021 - For 3/4" rod
BV021T - For 1" tubing
Standard projection - 3 1/2"
Available with horizontal leg

Set screws available for stabilizing rods.
Custom variations welcome.
Standard projection 3 1/2".

STEEL BRACKETS



Vertical Leg - 2 3/4"



B28 - For 3/4" rod
B28T - For tubing rod

Vertical Leg - 4"



B10-1 - 1" tubing
B10-138 - 1 3/8" tubing
3/4" wide stock

Adjustable Vertical Leg - 3 1/8"



B840 - 3" - 4"
For 3/4" rod
B840T - For tubing rods
Other projections available

Vertical Leg - 4"



BV02T - For tubing
1" wide stock

Vertical Leg - 3 1/8"



BV01 - For 3/4" rod
BV01T - For 1" tubing

Vertical Leg - 3 3/4"



BV03 - For 3/4" rod
BV03T - For 1" tubing

Set screws available for stabilizing rods.
Custom variations and projections available.
Standard projection 3 1/2".

STEEL BRACKETS

Horizontal Plate



B21-34 - Plate - $\frac{3}{4}$ " x $2\frac{3}{4}$ "
 B21-1 - Plate - 1" x $2\frac{3}{4}$ "
 B21-112 - Plate $1\frac{1}{2}$ " x $2\frac{3}{4}$ "
 For solid or tubing rods

Horizontal Plate - $1\frac{1}{2}$ " x $2\frac{3}{4}$ "
 1" wide stock



BH02T - For tubing rods

Horizontal Plate - $1\frac{1}{2}$ " x $2\frac{3}{4}$ "



1" wide socket
 BH50-112 - For $\frac{3}{4}$ "
 BH50T-112 - For tubing rods
 1½" long socket
 BN50-112 - For $\frac{3}{4}$ "
 BN50T-112 - For tubing rods

Horizontal Plate - $1\frac{1}{2}$ " x $2\frac{3}{4}$ "



B21A - Adjustable 3" - 4"
 Rods up to $\frac{3}{4}$ "
 B21A-T - Adjustable 3" - 4"
 For tubing rods

Horizontal Plate



B12-34 - Plate - $\frac{3}{4}$ " x $2\frac{3}{4}$ "
 B12-1 - Plate - 1" x $2\frac{3}{4}$ "
 B12-112 - Plate - $1\frac{1}{2}$ " x $2\frac{3}{4}$ "

Horizontal Plate - $1\frac{1}{2}$ " x $2\frac{3}{4}$ "



Traverse Bracket
 BHTR-34 - For $\frac{3}{4}$ "
 BHTR-1 - For 1"
 For use with traverse c-rings
 R3E-TR - For 1" ID
 R4ETR - For $1\frac{1}{8}$ " ID
 See page 40

STEEL BRACKETS



2" x 2"

For $\frac{5}{8}$ " or $\frac{3}{4}$ " Square
BSQ-58
BSQ-34



BV08 - Up to $\frac{3}{4}$ " rods

3 $\frac{1}{8}$ " Leg



Horizontal Plate - 1 $\frac{1}{2}$ " x 2 $\frac{3}{4}$ "

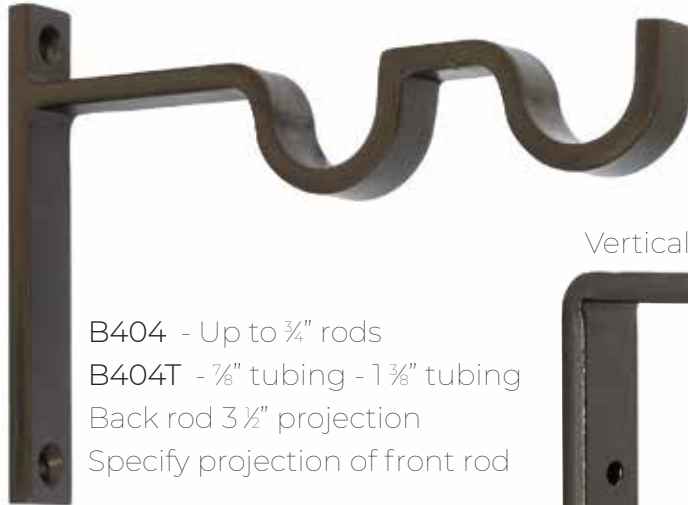
B401H - Up to $\frac{3}{4}$ " rods

B401HT - $\frac{7}{8}$ " tubing - 1 $\frac{3}{8}$ " tubing

Back rod 3 $\frac{1}{2}$ " projection

Specify projection of front rod

Vertical Leg - 4 $\frac{3}{4}$ "



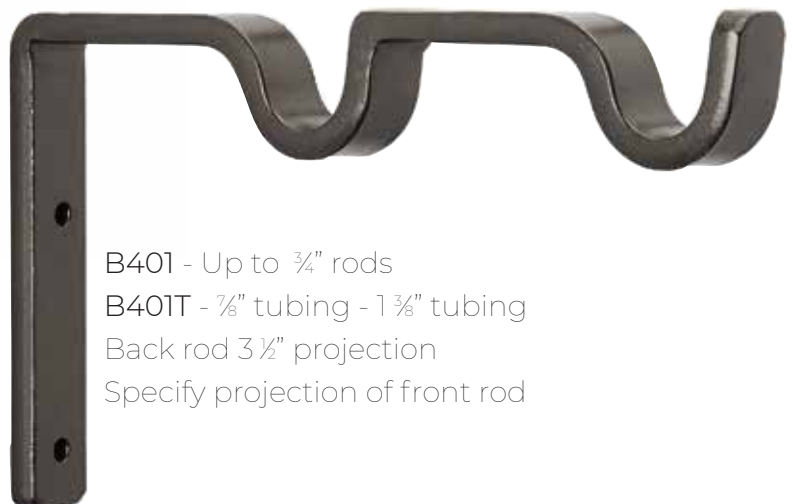
B404 - Up to $\frac{3}{4}$ " rods

B404T - $\frac{7}{8}$ " tubing - 1 $\frac{3}{8}$ " tubing

Back rod 3 $\frac{1}{2}$ " projection

Specify projection of front rod

Vertical Leg - 4"



B401 - Up to $\frac{3}{4}$ " rods

B401T - $\frac{7}{8}$ " tubing - 1 $\frac{3}{8}$ " tubing

Back rod 3 $\frac{1}{2}$ " projection

Specify projection of front rod

Set screws available for stabilizing rods.
Standard projection 3 $\frac{1}{2}$ ". Custom variations and projections available.

BRACKETS

INSIDE MOUNTS

Specify size of pole and exact opening.
We will make deductions.



Threaded inside mount
B18 - 3/8" - 3/4"
B18T - For 7/8" - 1 3/8" tubing



B20R
Inside mount on rectangular
back plate - Specify rod size



B20C
Inside mount on
2" circular plate
Specify rod size

CEILING BRACKETS



Plate - 1" x 2 3/4"

B14 - For solid rods
B14T - For tubing
Specify ceiling to
top of rod



B14C - For solid rods
B14T-C - For tubing
Specify ceiling to top of rod



B14-2 - For solid rods
B14T-2 - For tubing
Specify projection

Set screws available for stabilizing rods.
Custom variations and projections available.



RODS RINGS ACCESSORIES

RODS & RINGS



3/8" Round



1/2" Round



5/8" Round



3/4" Round



7/8" Tubing



1" Tubing



1 1/8" Tubing



R1
1/2" ID
3/4" OD
3/16" Stock



R2
3/4" ID
1 1/8" OD
3/16" Stock



R3
1" ID
1 3/8" OD
3/16" Stock



R4
1 3/8" ID
1 7/8" OD
1/4" Stock



R5
1 3/4" ID
2 1/4" OD
1/4" Stock

RODS & RINGS



RSQE1

Round stock
1" ID x 1 1/16" OD



5/8" Square



RSQE

Round stock
1 1/4" ID x 1 3/4" OD



3/4" Square

RFE-2

3/4" ID x 1" OD



5/8" Square Twist



RFE-3

1" ID x 1 1/4" OD



3/4" Square Twist

RFE-4

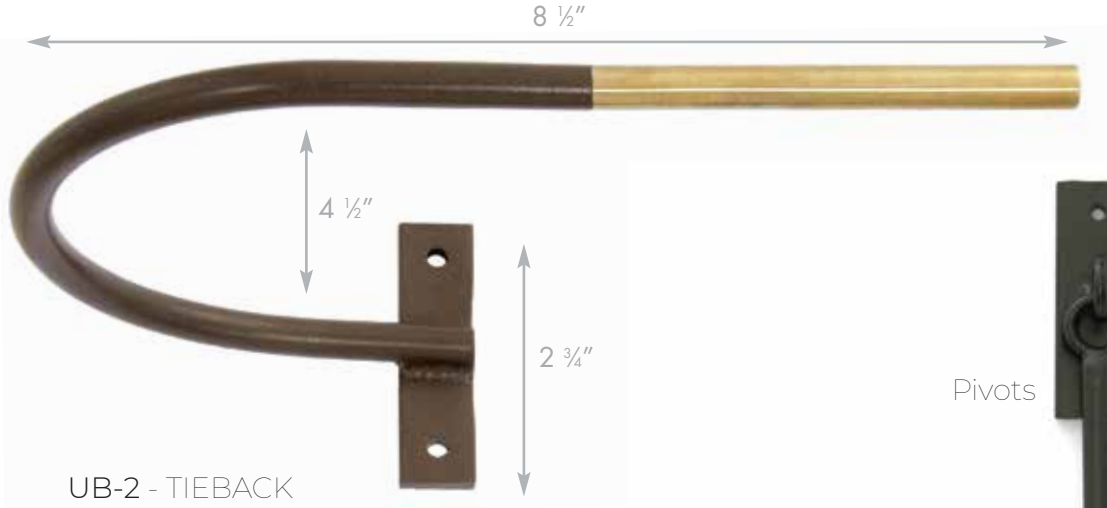
1 3/8" ID x 1 5/8" OD



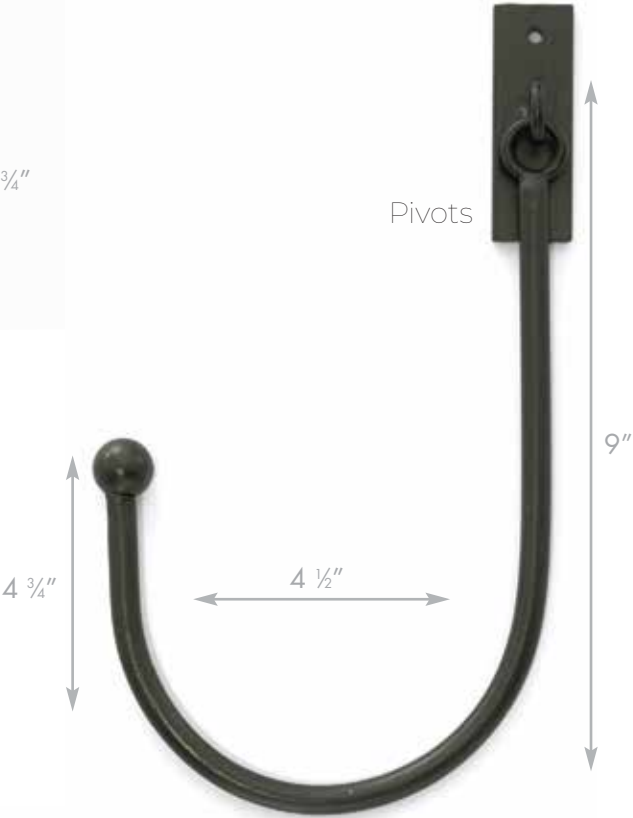
3/4" Double Twist

Rods are cut to exact length specified.
Custom rings available.

TIEBACKS & WAND



UB-2 - TIEBACK
Interchangeable mixed metals



L92TB - TIEBACK

HOLDBACKS



HB - HOLDBACK
1/4" round stock stem
Threaded screw end
Specify projection up to 4"

WANDRG - with ring
Specify length up to 4'
& size of ring

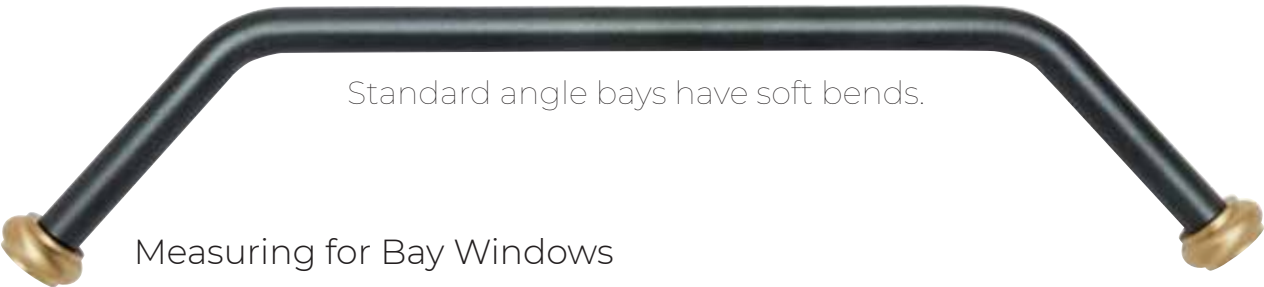




SPECIALTY WINDOWS

ANGLE BAYS

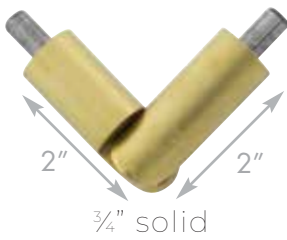
1/2" - 3/4" solid - 7/8" - 1 3/8" tubing



Standard angle bays have soft bends.

Measuring for Bay Windows

Take wall measurements on same plane where brackets will be installed.
Provide degree of angles. We will displace the rod based on bracket projection.
Angle measurement can be taken as follows:
Set of two overlapped 5"x 8" hard index cards or time cards for each corner angle
Staple together and specify left and right side angle
Protractor degree measurement or full template

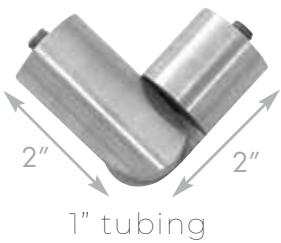


Adjustable Corner



Perfect for angle bays, square bays,
and corner windows.
Adjustable from 90° - 180°

ADJ
Adjustable corners
available



French Return



Adjustable corner
Available in steel, brass and stainless

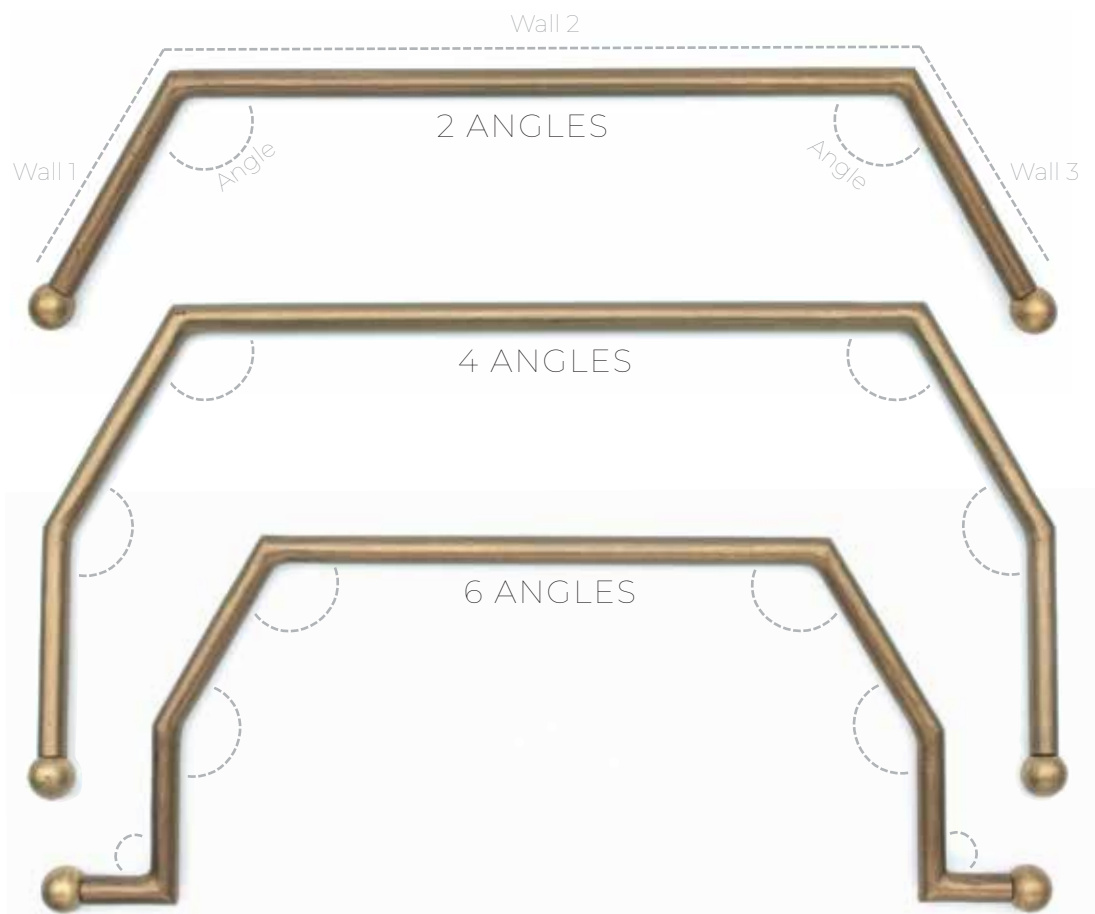
ANGLE BAYS



$\frac{1}{2}$ " - $\frac{3}{4}$ " solid - $\frac{7}{8}$ " - $1\frac{3}{8}$ " tubing

Rods will be threaded or pinned for shipping purposes

Angles can be soft or sharp





CURVED IRON RODS

Let the distinction of the window be enjoyed.

Rod curved for bay, bow or arch windows.

Available: $\frac{1}{2}$ " - $1\frac{3}{8}$ " rods

Choose finial or french return.
Template required



B840
B840-T



B21A
B21A-T

Adjustable brackets recommended for curved rods



Horizontal Curve
Curved for bay windows with finial ends



Vertical Arch
Curved over arched windows
Holes will be drilled on top of rod/Rings will have pegs
Ring position must be noted on template

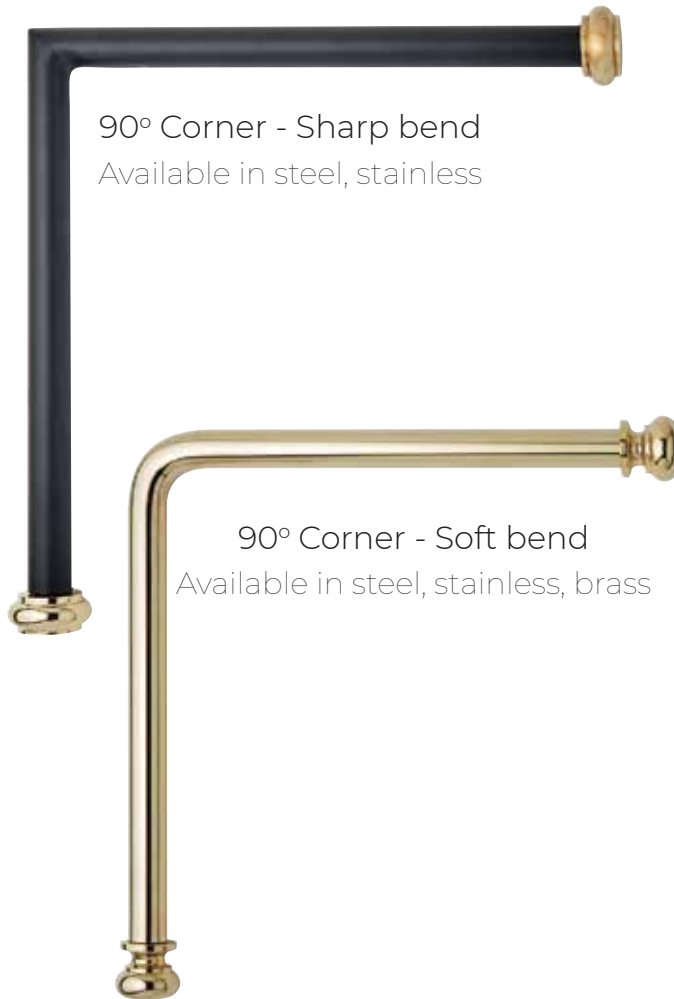


Horizontal Curve
Curved with french returns

ANGLED RODS



Unify corner windows with a continuous rod
Angled rods available all rod sizes
Angles can be sharp or soft



Pole Connections



Pinned

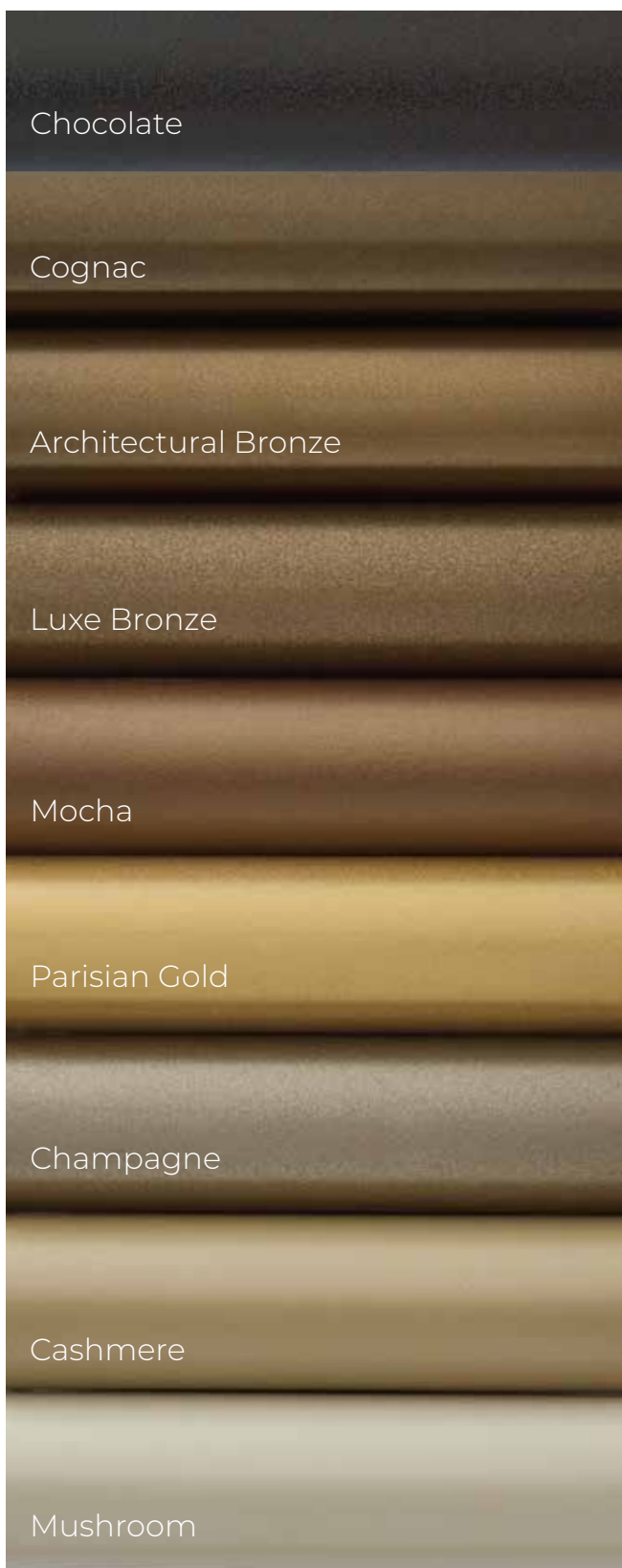


Threaded

All rods will be pinned or threaded for shipping purposes.

POWDER COATED FINISHES

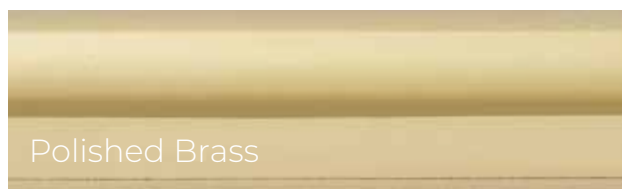


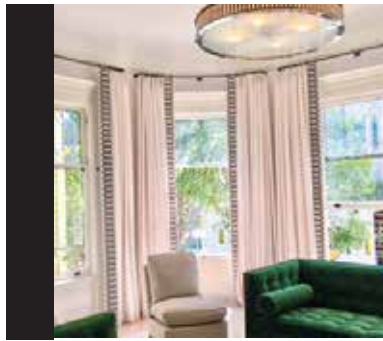
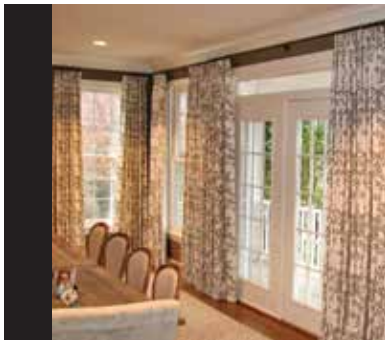


Powder coating is a type of coating that is applied as a free-flowing dry powder. The metal is prepped, the color is sprayed onto the surface with an electrical charge and then cured in an oven. This high-quality finish is resistant to weather, chipping, scratching, and fading.

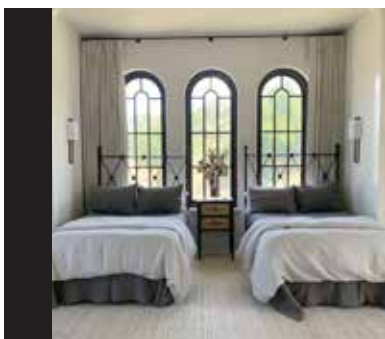
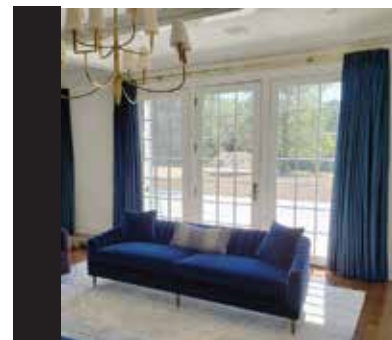
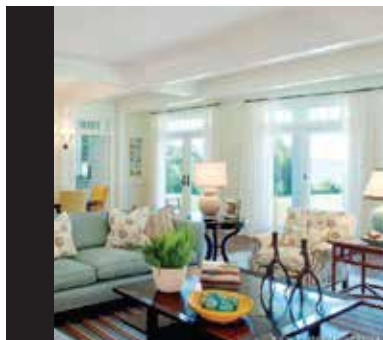
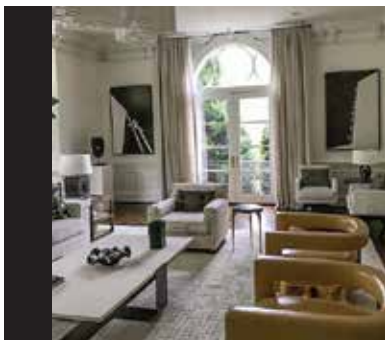
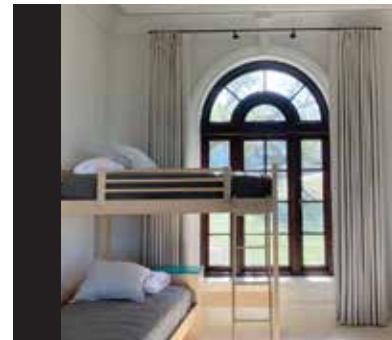
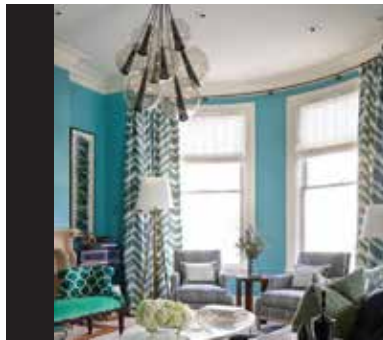
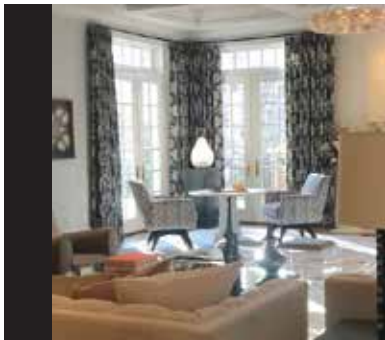
SPECIALTY METALS

Brass available with or without lacquer finish





Custom
Quality
Craftsmanship



IT'S IN THE
DETAILS



SPECIALTY METALS

SPECIALTY METAL - BRASS



1/2" Round



3/4" Round



1" Round



BCR58E
5/8" ID x 7/8" OD



BCR2E
3/4" ID x 1" OD



BCR3E
1" ID x 1 3/8" OD



BCR14E
1 1/4" ID x 1 3/4" OD



BCRF2E
3/4" ID x 1" OD



BCRF14E
1 1/4" ID x 1 1/2" OD

Brass is an organic living metal consisting of a mix of copper and zinc. The yellow color of the component pieces will vary and oxidize over time depending upon touch, climate, time and exposure to the elements. No two pieces are exactly alike and each piece will age differently over time.



BC23 - 3/4" Rod



BC07 - 1" Rod



BC58 - 1/2" Rod



BCA13 - 3/4" Rod



BC500 - 3/4" Rod

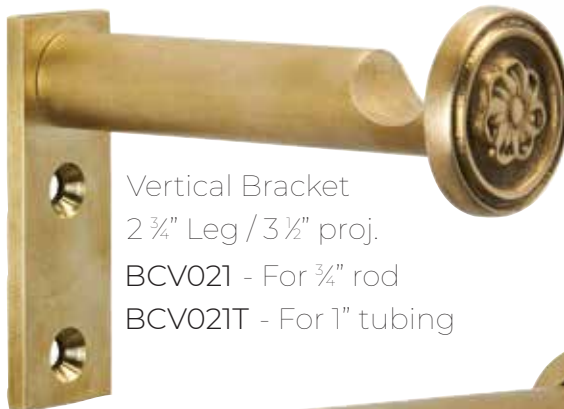
BRASS BRACKETS



Vertical Bracket
 $\frac{3}{4}$ " Wide Stock / $3\frac{1}{8}$ " Leg
BCB2 - $3\frac{1}{2}$ " proj. for $\frac{3}{4}$ "



Vertical Bracket
 1" Wide Stock / 4" Leg
BCV02T - For 1" tubing
 Available with horizontal leg



Vertical Bracket
 $2\frac{3}{4}$ " Leg / $3\frac{1}{2}$ " proj.
BCV021 - For $\frac{3}{4}$ " rod
BCV021T - For 1" tubing



BCB18
 Threaded inside mount
 Specify rod size and exact opening
 We will make deductions



Horizontal Plate - $1\frac{1}{2}$ " x $2\frac{3}{4}$ "

BCH021
 Available for $\frac{3}{4}$ " or 1"



Plate - 1" x $2\frac{3}{4}$ "
BCB14 - Specify from
 ceiling to top of rod



Horizontal Bracket
BCB52-112 - Socket - for $\frac{3}{4}$ "
 Plate - $1\frac{1}{2}$ " H x $2\frac{3}{4}$ " L

Standard projection $3\frac{1}{2}$ "
 Set screws available for stabilizing rods.
 Custom variations welcome.
 Available in satin or polished finish with or without lacquer.

SPECIALTY METAL - STAINLESS

Available in satin or polished finish



1/2" Round



3/4" Round



1" Round



SR2E
3/4" ID



SR3E
1" ID



SR112E
1 1/2" ID



S03 - 3/4" Rod



S61 - 3/4" Rod



S31 - 3/4" Rod



SA8 - 1/2" Rod



S450 - 1" Rod

STAINLESS BRACKETS



SB2X - 3 1/2" to center
For 3/4" rods

3 1/8" leg

SB99 - Socket
2" Circle Plate
For 3/4" rods
Socket is 1" wide



Plate
1 1/2"H x 2 3/4"L



SB21-112
For 3/4" - 1" rods



Plate 1 1/2"H x 2 3/4"L

SBH02T - For 1" tubing



SBV02T - 3 1/2" standard projection
For 1" tubing

Plate 1"W x 2 3/4"L

4" leg



SB14
Specify projection from
ceiling to top of rod



SBCIR - 2" Circle Plate



SB18
Threaded inside mount
For 1/2" / 3/4" round rod



SBV021
3 1/2" standard projection
For 3/4" or 1" rods

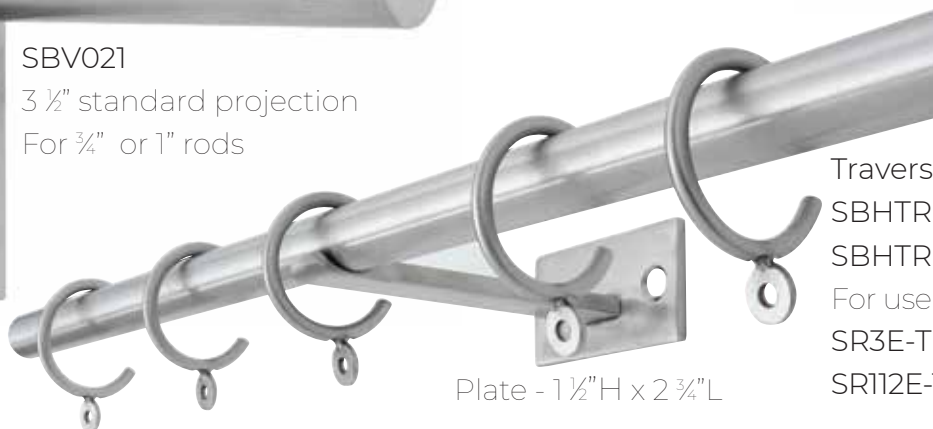


Plate - 1 1/2"H x 2 3/4"L

Traverse Bracket
SBHTR-34 - For 3/4" rods
SBHTR-1 - For 1" rods
For use with traverse c-rings
SR3E-TR - 1" ID
SR112E-TR - 1 1/2" ID

Set screws available for stabilizing rods.
Standard projection 3 1/2". Custom variations and projections available.

FRENCH RODS

Available in satin or polished finish - 3/4" rod



BRACKET STEMS

Rectangular plate with pole at top
Rod slides over bracket with stem and tightens with set screw



Pin may be required for shipping purposes.
Standard projection 3 1/2" or 4" to center.

DRAPERY HARDWARE

Since 1965

We listen, we learn, and then create

We want to hear from you! Your ideas, suggestions, and feedback ensure we are continuously building the right products and features. Lundy's has evolved through continued collaboration with our customers. We strive to build strong, trustworthy relationships with our design savvy customers. We will always look for your creative compass to help guide us.

Fabrication

Techniques used to fabricate our hardware include CNC, milling and lathe, welding, plasma cutting, sandblasting, powder coating, hand painting and polishing. All of products are made with the utmost attention to detail, quality and value.

Featured in

Architectural Digest
Better Home & Gardens
House Beautiful
New England Home
Old House Journal
Southern Living
This Old House
Traditional Building
Traditional Home

Our Team

Our staff includes talented fabricators, hardware finishers, blacksmiths, machinists, and customer service reps. Each employee goes above and beyond to make our customers happy. We all remain true to our roots that making quality products, paying close attention to details, and supporting the expectations of our customers is what has established us as a leading manufacturer of quality drapery hardware.

Customization

We help you build your hardware from length of rods, specific projections, longer/shorter brackets, custom plates, rings, or finials. "*Customization*" is our standard.

Let's Keep In Touch

800-468-6040
info@lundysiron.com
34 Boston Street, Lynn, MA 01904





Have questions? Give us a ring



TEL: 781-595-8639 | TOLL FREE: 800-468-6040
34 BOSTON STREET | LYNN, MASSACHUSETTS | 01904
WWW.LUNDYSIRON.COM | INFO@LUNDYSIRON.COM